

## DENSITY LINE ADJUSTABLE REAR UPPER CONTROL ARM

**034 MOTORSPORT**

034Motorsport Density Line Rear Adjustable Upper Control Arms are a direct replacement for the stock stamped steel and rubber arms, and allow for approximately 5 degrees of camber adjustment, on top of what the stock eccentric bolt allow.

## Installation Spiciness Rating: MILD



Installation of your 034Motorsport Rear Upper Control Arm Kit is a straightforward process that will take approximately one hour to complete (not including alignment).

### Supplied Parts:

- (2x) billet rear control arms with bushings
- (2x) threaded rubber bushings with jam nuts
- (2x) brake cable brackets
- (4x) rod end spacers (401-Z044)
- (1x) anti-seize packet

### Tools Needed:

- (2x) 21mm sockets or wrenches
- 18mm socket
- Rubber mallet for stubborn bolts

### Getting Started

Confirm you have received all the parts included with your purchase by reading the complete guide, if there are missing components, please contact:  
[customerservice@034motorsport.com](mailto:customerservice@034motorsport.com)

### About This Guide

This Install Guide documents the installation process on a MK7 VW GTI. There may be minor differences depending on specific vehicle, market, options, etc.



## Assembly Steps

### Step A

Open hardware packages.



### Step B

Apply half packet of anti-seize to each threaded bushing.



### Step C

Run the jam nut down the shaft to disperse the anti-seize along the entire threaded portion.



### Step D

Place brake cable bracket in proper position, and thread the bushing into the billet rear control arm.



You are now ready for the installation process.



## Install Steps

### **Step 1**

Raise the vehicle securely to gain access to the rear suspension.

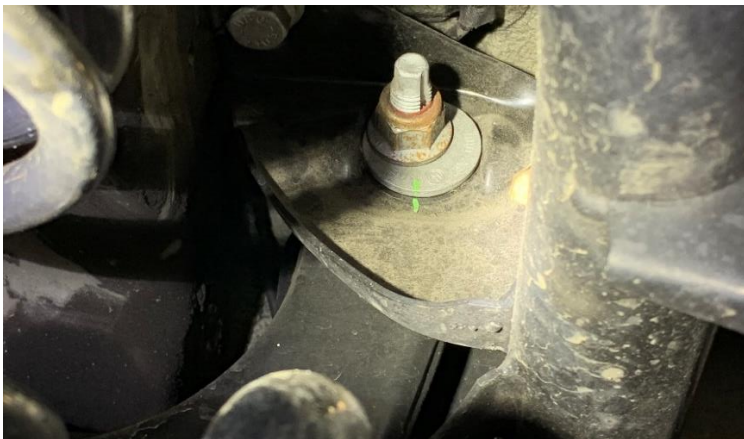
### **Step 2**

Remove the rear wheels.



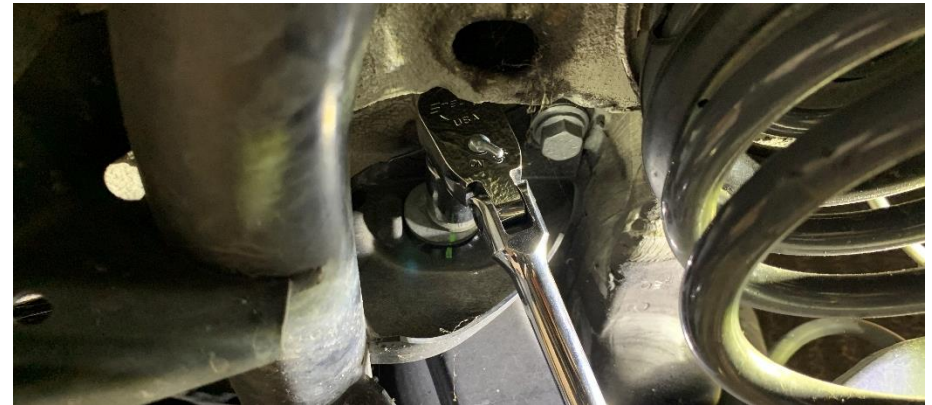
### **Step 3**

Mark the eccentric washer and subframe to identify orientation when reassembling.



### **Step 4**

Using an 18mm socket, remove the nut from the rear subframe mount containing the control arm. Remove the washer and bolt as well.



### **Step 5**

Remove the ABS sensor wire from the bracket on the control arm. Removing the bracket itself is not necessary.

### **Step 6**

Using (2) 21mm sockets or wrenches, remove the nut from the rear hub assembly. Remove the washer and bolt also.

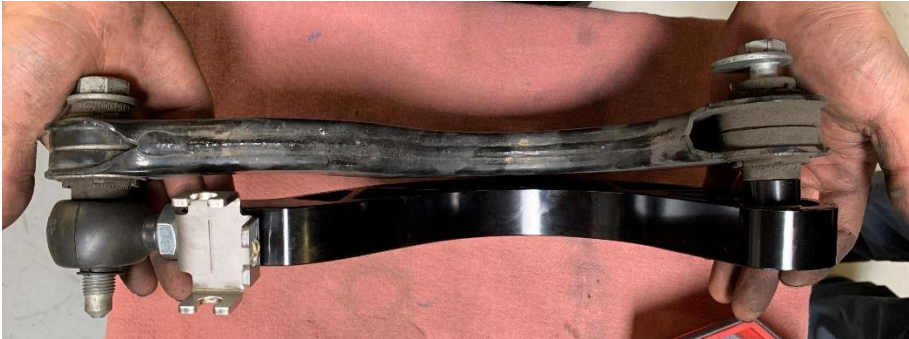


**Step 7**

The factory rear upper control is now ready to be removed.

**Step 8**

Use the factory arm as a reference to match the length for the new adjustable arm.

**Step 9**

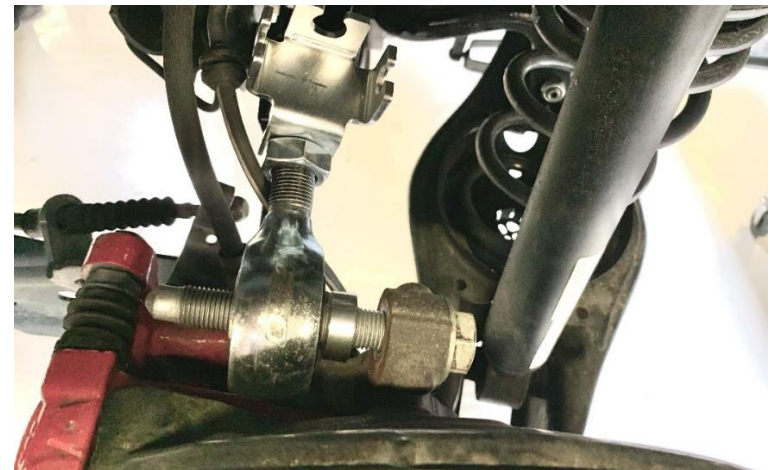
Insert the 034 arm into the subframe mount using the factory hardware.



\*Make sure you return the eccentric washer to its previous orientation and match up the marks you made in step 2.

**Step 10**

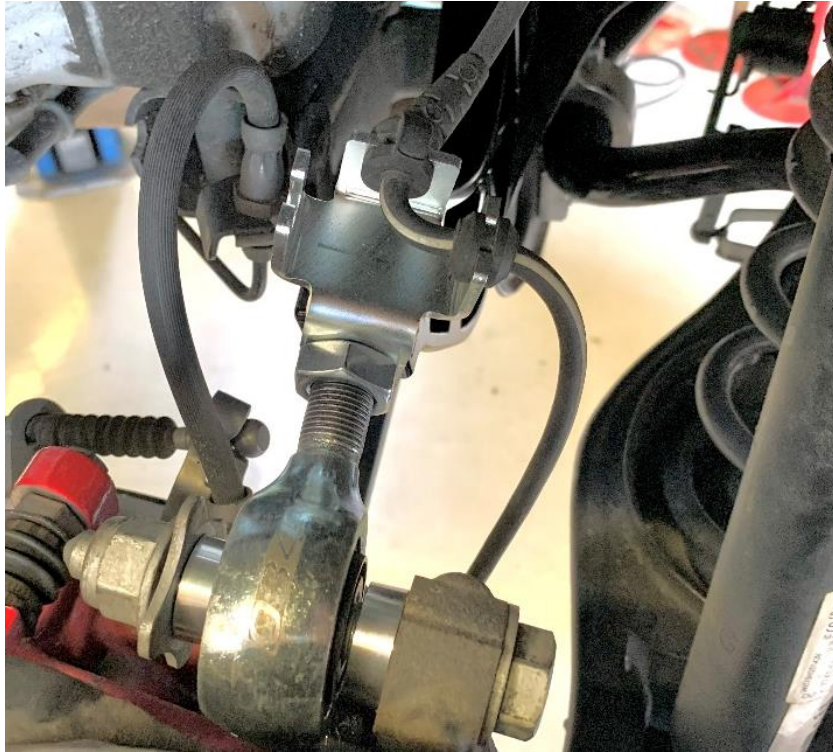
Partially insert the factory bolt into rear hub assembly, and sandwich one of the spacers between the hub mount and the rod end, flare facing outward. Slide the bolt through the rod end and sandwich the second spacer between the rod end and the washer, flare facing outward. Use the factory nut to secure the assembly.





**Step 11**

Attach the ABS sensor wire to the bracket on the 034 arm.

**Step 12**

Repeat the process for the other side of the vehicle.

**Step 13**

Put your rear wheels back on and Lower the car back to the ground.

**Step 14**

Be sure to get an alignment after to fine tune your adjustments!

**Step 15**

Enjoy your new 034 adjustable rear upper control arms!

