

Motorsport Rear End Link Kit, Mk5/6. 8P/8J**034 MOTORSPORT**

034Motorsport's Billet Adjustable Rear Sway Bar End Links allow for instant transfer of suspension movement to the sway bar. These end links are also length adjustable to eliminate preload on the sway bar.

* For lowered vehicles, always check all clearances over the full articulation of the suspension to identify possible interference

Installation Spiciness Rating: MILD



Installation of your 034Motorsport Motorsport Rear End Link Kit is a straightforward process that will take approximately one hour to complete.

Supplied Parts:

- (2x) Billet end links with spherical bearings and circlips installed
- (2x) Spherical heim joints with jam nuts
- (2x) M10 x 55mm bolts
- (2x) M10 x 60mm bolts
- (4x) M10 locking nuts
- (4x) End link spacers
- (2x) Dust boots
- (1x) Anti-seize packets

Tools Needed:

- (2x) 19mm Wrenches
- 18mm Wrench
- 17mm Wrench
- 16mm Wrench
- 6mm Triple-square
- 8mm Allen bit
- 5mm Allen bit
- Torque Wrench

Getting Started

Confirm you have received all the parts included with your purchase by reading the complete guide, if there are missing components, please contact:

customerservice@034motorsport.com

About This Guide

This Install Guide documents the installation process on a 2008 VW Golf R32. There may be minor differences depending on specific vehicle, market, options, etc.



Assembly Steps

Step 1

Open hardware packages.



Step 2

Apply half packet of anti-seize to spherical heim joint.



Step 3

Run the jam nut down the shaft to disperse the anti-seize along the entire threaded portion.

**Step 4**

Install the heim joint into the billet end links, leaving about 2-3 threads exposed.

**Step 5**

Install the end link spacers into the heim joints and spherical bearings.

* We ship the dust boots uninstalled; once you have the alignment set, install the dust boots before final installation (optional).

You are now ready to start the installation process.

Install Steps**Step 1**

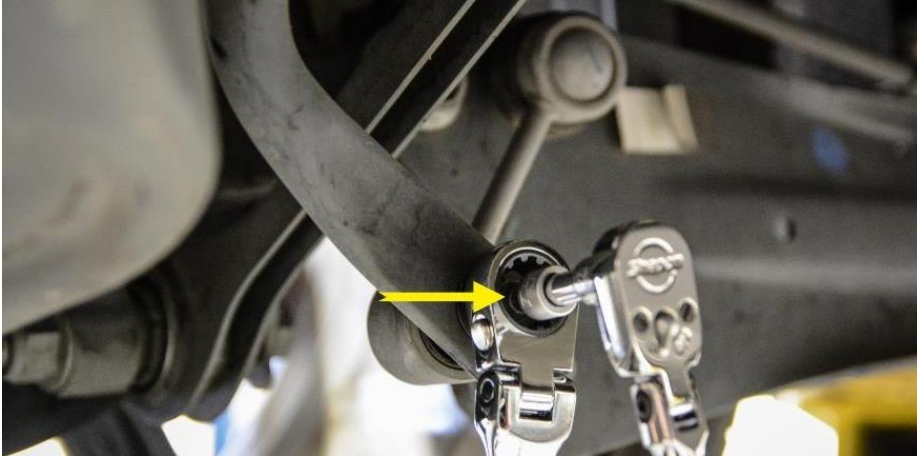
Lift the car to access the rear suspension.

**Step 2**

Remove the rear wheels.

Step 3

Using a 16mm wrench and 6mm triple square (for stock hardware), remove the nut securing each of the rear sway bar end links to the rear sway bar. Hardware specifics may vary depending on parts that may be installed on the car.

**Step 4**

From the outside of the trailing arm, using a 16mm wrench and 6mm triple square (for stock hardware), remove the nut securing upper bolt, then remove the end link.

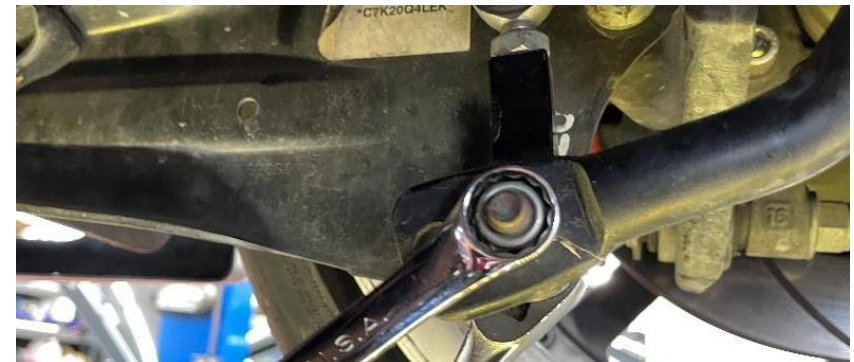
**Step 5**

Using a 17mm wrench and an 8mm Allen, install the heim joint end of the 034 end link onto the trailing arm. The nut should be on the outside of the trailing arm, the bolt head (60mm) on the inside.

**Step 6**

Using a 17mm wrench and an 8mm Allen, install the bearing end of the 034 end link onto the sway bar. The nut should be on the inside of the sway bar, the bolt head (55mm) on the outside of the sway bar.

Make sure that the spacer is sandwiched between the sway bar and rear end link.



Step 7

Tighten jam nuts to center section using a 19mm wrench. Counter-hold center section with another 19mm wrench.



(These end links have had a happy life, don't mind the weathered hardware. They were new when installed, long before this photo was taken!)

Step 8

Repeat steps 3-7 for the other rear end link.

Step 9

Torque all hardware to **40Nm**.

Step 10

Make sure all hardware has been tightened to spec, reinstall rear wheels, lower car, and enjoy the crisp handling!

