

## Motorsport Adjustable Rear Toe Links, BMW F2x/F3x



034Motorsport's Motorsport Adjustable Rear Toe Links for the BMW F2x/F3x Chassis are designed to be a direct, drop-in upgrade for the cast steel factory rear toe links. These high-quality adjustable toe links replace the factory fixed-geometry arms to allow for precise toe adjustments when aligning your F2x/F3x BMW. 034Motorsport Motorsport Adjustable Rear Toe Links feature high strength billet aluminum bodies, Aurora spherical rod ends, and billet aluminum spacers to provide precise adjustability, eliminate deflection, and improved handling.

## Installation Spiciness Rating: MILD



Installation of your 034Motorsport Rear Toe Link kit is a straightforward process that will take approximately an hour to complete, excluding alignment.

### Supplied Parts:

- (2x) Billet Adjustment Rods
- (2x) Aurora Spherical Rod Ends & Jam Nuts (RH Threads)
- (2x) Aurora Spherical Rod Ends & Jam Nuts (LH Threads)
- (4x) Billet 6061 Aluminum Spacers
- (4x) Rubber Boots
- (2x) Anti-Seize

### Tools Needed:

- 24mm Wrench
- 18mm Wrench
- 18mm Socket
- E14 Socket
- Torque Wrench
- Paint Marker

### Getting Started

Confirm you have received all the parts included with your purchase by reading the complete guide, if there are missing components, please contact:

[customerservice@034motorsport.com](mailto:customerservice@034motorsport.com)





## Step C

Run the jam nut down the shaft to disperse the anti-seize along the entire threaded portion.



## Step D

Install the right-hand threaded bushing into the hexagonal side of the end link tube. The left-hand threaded bushing goes into the cylindrical side of the end link tube.



## Install Steps

### Step 1

Raise the vehicle securely on jack stands, or a lift, and remove rear wheels to gain access to the rear suspension.



### Step 2

Using an 18mm wrench, remove the outer bolt attaching the stock toe link to the spindle.





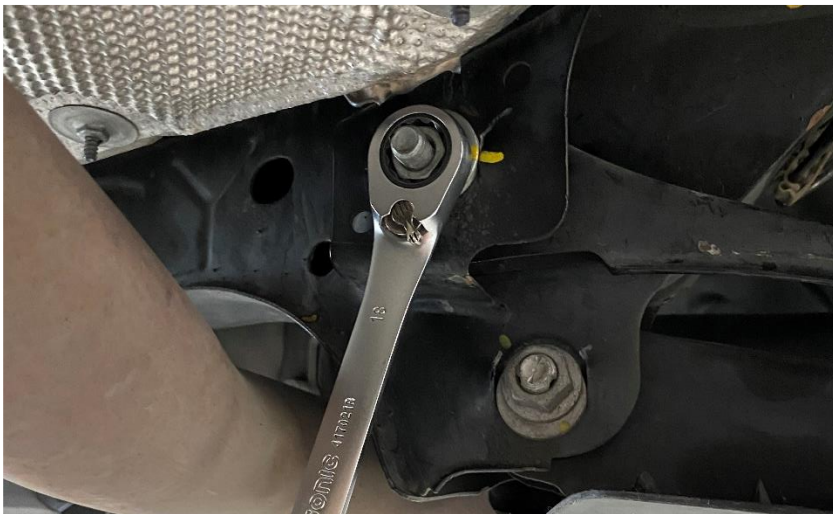
### Step 3

Mark the eccentric washer on the inner bolt.



### Step 4

Use an E14 socket and 18mm wrench to remove the bolt from the subframe mount. The stock rear toe link is now free to be removed.



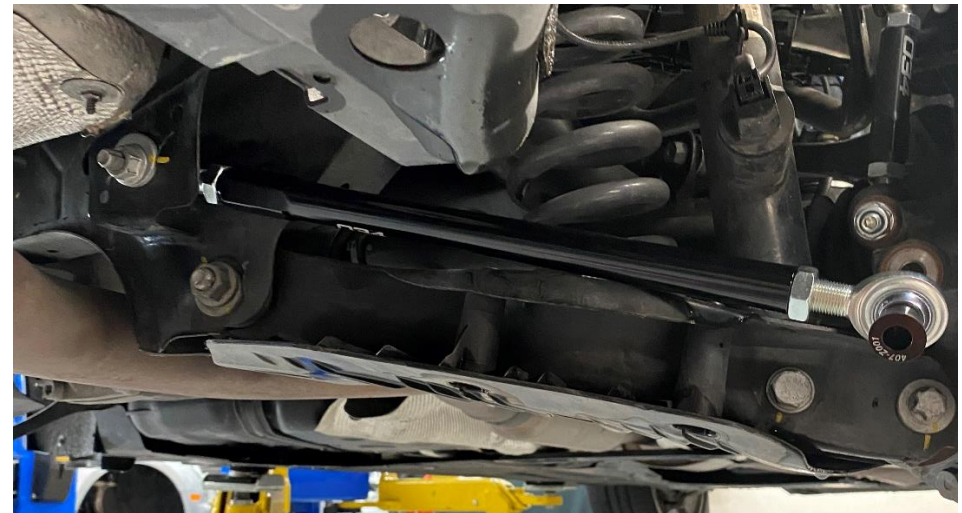
### Step 5

Use the length of the stock toe link to set the initial length of the 034 adjustable rear toe links. (Extra tip: Use the bolt holes as a guide to align the two toe links)



### Step 6

Install in reverse order from removal.



**Step 7**

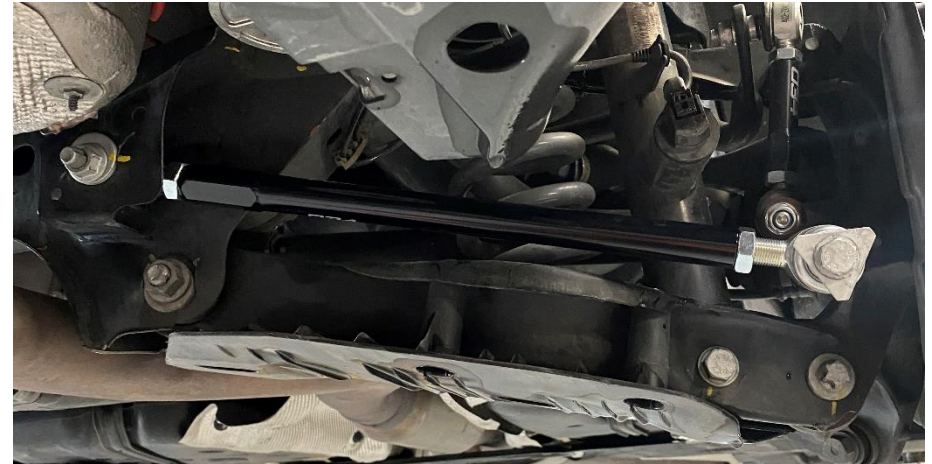
Ensure the inner eccentric bolt/washer are in correct orientation.

**Step 8**

Thread the outer bolt back into the spindle.

**Step 9**

Torque the outer bolt to **40 Nm + 90°**. Inner bolt to **40 Nm**.

**Step 9.5**

This is the ideal point at which to get a professional alignment. Adjustments can be made using a 24mm wrench on the jam nuts and hexagonal end of the toe links.

**Step 10**

Reinstall the wheel and torque lug bolts to **122 Nm** or **90 ft/lbs**.

**Step 11**

Repeat steps 2 thru 10 on the opposite side.



## Step 12

Enjoy the added performance and feedback provided by your 034Motorsport Rear Toe Links!

