

F8X Density Motor Mount Pair

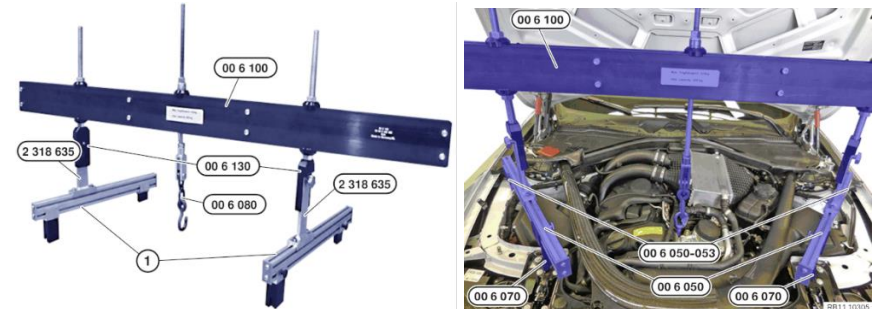


034Motorsport Street Density Motor Mounts are the new standard in comfort and performance. These mounts are redesigned with performance in mind and manufactured from high-durometer rubber for increased performance and durability without sacrificing comfort. Density Motor Mounts are optimized void-free and fluid-free, eliminating the slop and the possibility of leakage and collapse associated with the factory mounts.

- Remove carbon engine brace.



- Install engine support hoist.



- Raise vehicle.
- Using an 8mm and 16mm socket, remove the metal belly pan.



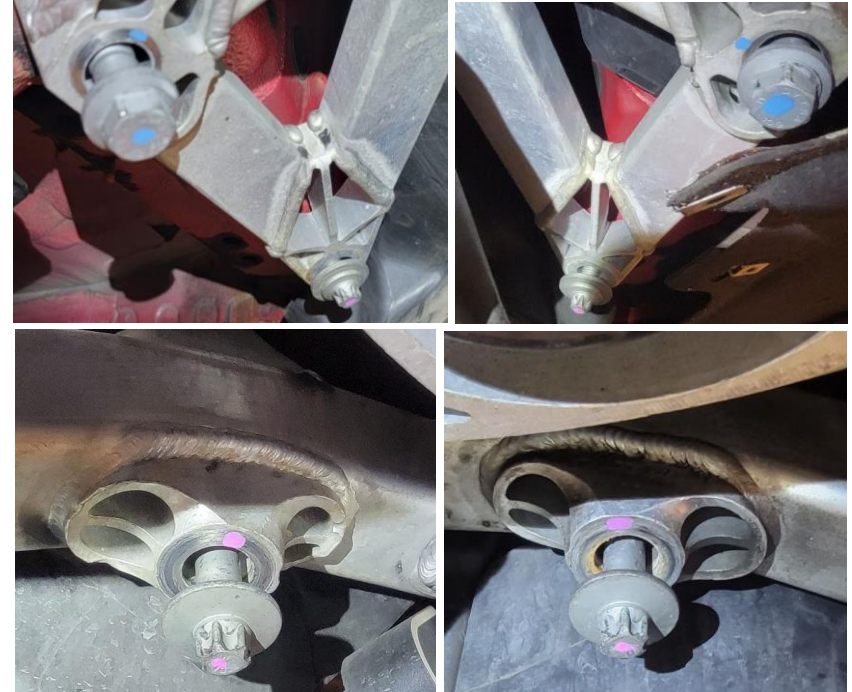
- Using an 8mm socket, remove plastic/fabric belly pan.



- Using an 8mm socket, remove the plastic side covers.



- Remove the 8 front subframe bolts:
 - 6 bolts E14 socket.
 - 2 bolts 18mm socket.



- Using a 16mm socket, remove the top nuts of both engine mounts.



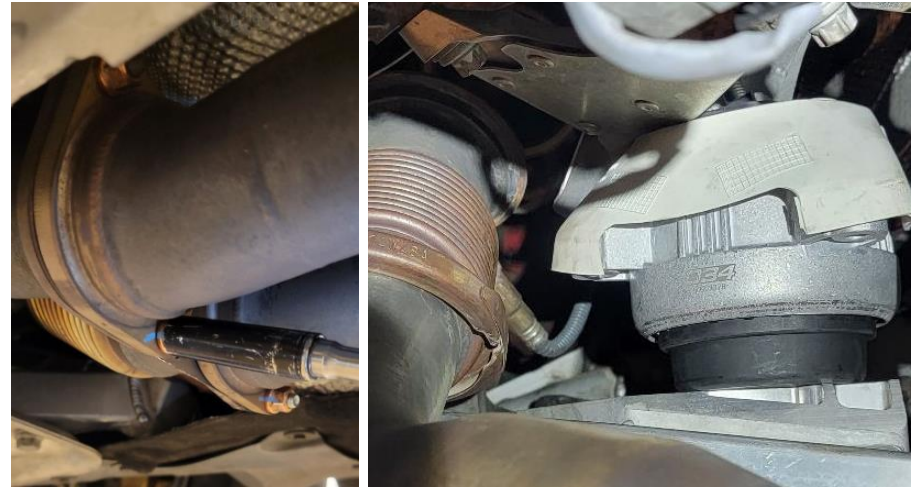
- Using an E10 socket, remove the 3 bolts on each of the engine mounts.



- Left side:
 - Raise the engine as high as the hoist will allow before coming to a stop. Remove the engine mount.



- Right side:
 - While the engine is still raised at its highest point, remove the inner down pipe closest to the transmission using a 13mm socket on the factory turbo clamp and 12mm socket for the mid pipe section.



- Using a small pry bar, **lightly** pull down on the right rear of the subframe to remove the engine mount.
- Install in reverse.
- **All carbon engine brace bolts are to be replaced as they are one-time use as per the Manufacturer's guideline.**
 - Rear: [11 28 7 839 136]
 - Torque to 28Nm.
 - Front: [22 32 6 760 945]
 - Torque to 28Nm.

- All subframe bolts are to be replaced as they are one-time use as per the Manufacturer's guideline.
- Front: [31 10 6 793 894] M12x45
 - Torque to 120Nm.
- Center: [31 10 2 284 536] M12x145
 - Torque to 108Nm.
- Rear Outer: [07 11 9 908 497] M14x105
 - Torque to 120Nm.
- Rear Inner: [31 10 6 862 545] M10x40
 - Torque to 56NM+90°
- An alignment is highly recommended.

