

**B9 SQ5 Rear Subframe Inserts****034 MOTORSPORT**

034Motorsport's new rear subframe inserts are made to fill the voids of the factory rubber mounts and help maintain proper suspension geometry while cornering, without any additional NVH. Made of 6061-T6 aluminum and finished with a clear anodize.

**Installation Spiciness Rating: MILD**

Installation of your 034Motorsport Rear Subframe Inserts is a straightforward process that will take approximately 1 hour to complete.

**Supplied Parts:**

- (2x) 601-0057 "front" inserts for rear subframe
- (2x) 601-0058 "rear" inserts for rear subframe

**Tools Needed:**

- T25 Torx Driver
- 21mm socket
- 18mm socket
- 10mm socket
- Torque wrench
- Prybar or flathead screwdriver

About This Guide

This Install Guide documents the installation process on a B9 Audi SQ5. There may be minor differences depending on specific vehicle, market, options, etc.

Getting Started

Confirm you have received all the parts included with your purchase by reading the complete guide, if there are missing components, please contact:

[customerservice@034motorsport.com](mailto:customerservice@034motorsport.com)

### Install Steps

#### Step 1

Raise the car up, preferably on ramps, so the car still under load.



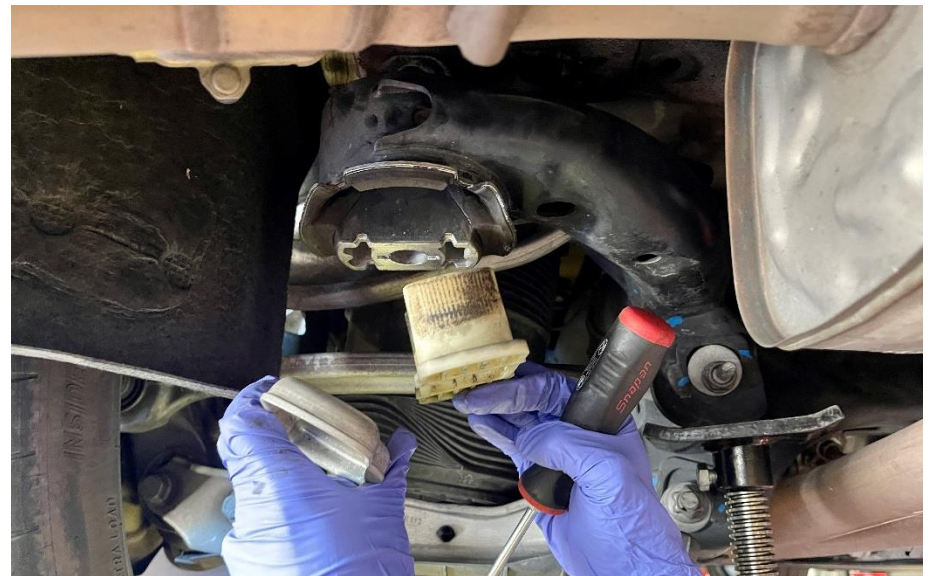
#### Step 2

Using an 18mm socket, remove the bolts from the "rear" bushings on the rear subframe.



#### Step 3

Using a prybar or similar, separate the factory insert and bracket from the bushing.





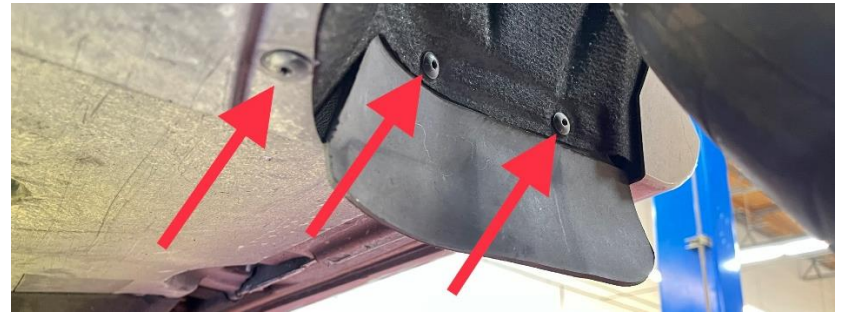
#### Step 4

Apply grease to the billet insert and reuse factory hardware to install insert into bushing. Repeat steps 2-4 for the other side of the car. Torque to **90Nm + 180\*** while under load.



#### Step 5

The "front" insert for the rear subframe on the right-hand side will require removing the underbody tray for access.





**Step 5 cont.**

There are (4x) 10mm plastic nuts and (8x) T25 screws holding the plastic liner in. 2 are hidden in the rear wheel well, while 2 plastic screws and push tabs are located on the side near the jack point. The left-hand side is easily accessible.

**Step 6**

Using a 21mm socket, remove the bolts securing the factory insert and bracket. \*We used a pole jack to help support the rear subframe.

**Step 7**

Using a prybar or similar, remove the factory insert.



Observe and appreciate the hefty new hardware.



#### Step 8

Apply grease to the billet insert.



#### Step 9

Reuse the factory hardware to secure the insert into the bushing. Repeat steps 6-9 for the other side of the car.  
Torque to **130Nm + 180\*** while under load.



#### Step 10

Reinstall the underbody tray.



#### Step 11

Enjoy your new stiff suspension goodies.

