



[034Motorsport Dynamic+ Adjustable Rear Sway Bar, B9 Audi A4/S4, A5/S5, Allroad](#)



**Supplied Parts:**

- 034Motorsport Dynamic+ Adjustable Rear Sway Bar for B9 Audi A4/S4, A5/S5, and Allroad
- 034Motorsport Billet Rear Sway Bar Brackets & Polyurethane Bushings with Installation Hardware

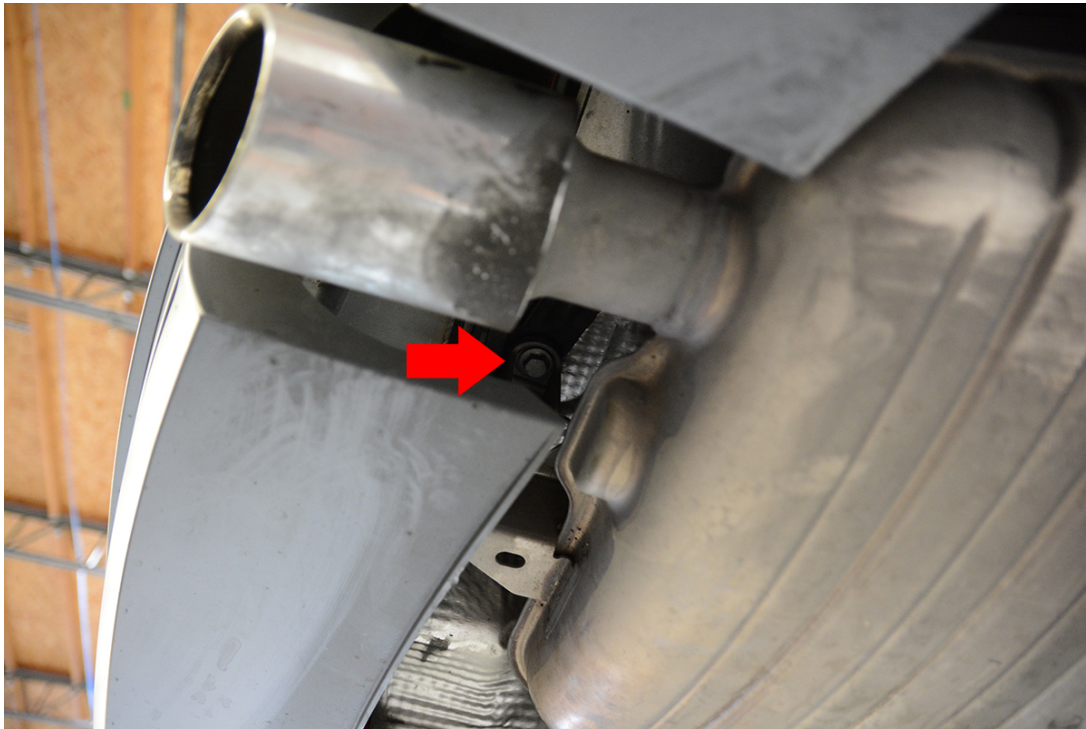
**Tools Needed:**

- 16mm Wrench
- Another 16mm Wrench
- 3" Extension
- 12" Extension
- 6mm Allen Key
- 13mm Socket
- 16mm Socket
- 10mm Triple Square
- 12mm Triple Square (Allroad, Sportback, Cabriolet)
- Swivel Socket Adapter
- Torque Wrench
- Lift, Ramps, or Jackstands

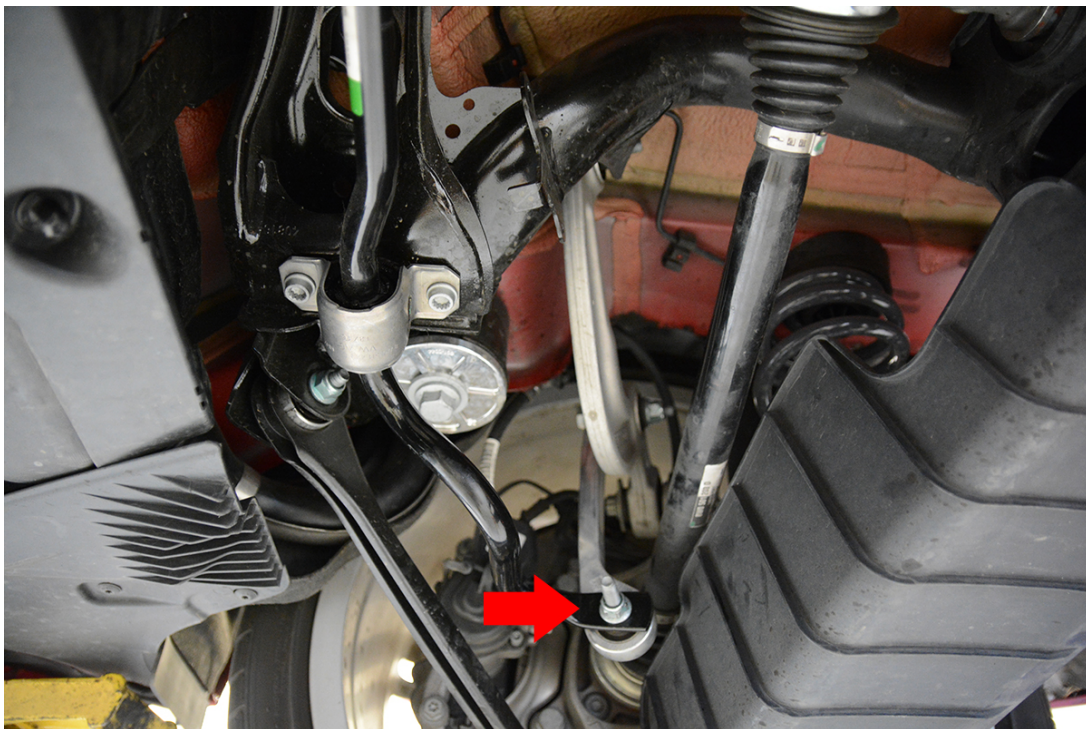
Installation of your 034Motorsport Adjustable Solid Rear Sway Bar is a straightforward process that will take about one hour to complete.

**Step 0** – Raise the vehicle securely using a lift, jackstands, or ramps in order to access the rear sway bar.

**Step 1** – Remove the bolts securing the exhaust hangers to the vehicle. This will allow the exhaust to sag slightly, and give you more room to remove the rear sway bar from the vehicle.

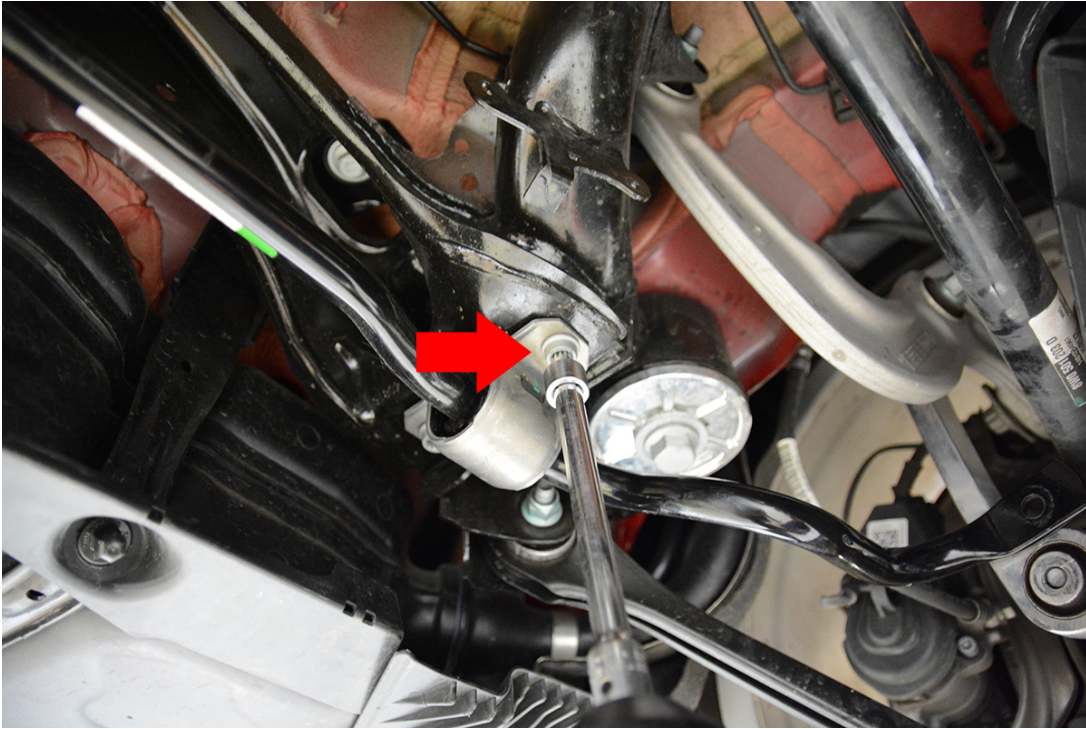


**Step 2** – Remove the rear sway bar end link bolts and nuts, detaching the rear sway bar end links from the rear sway bar.

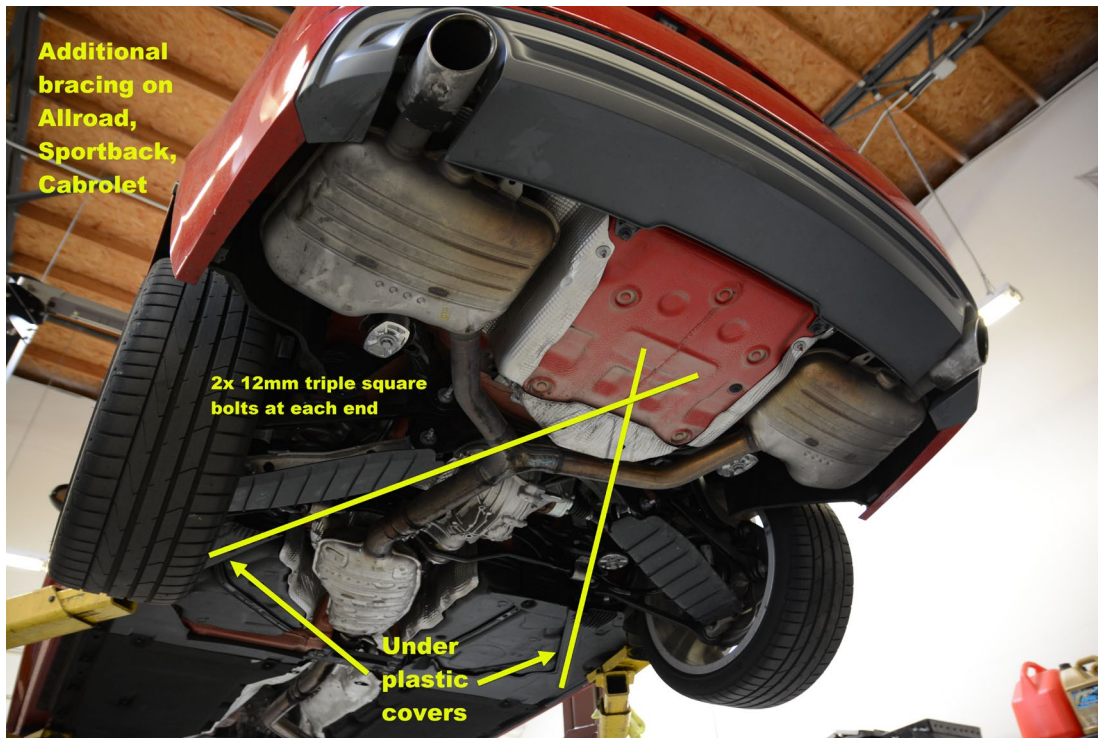




**Step 3** – Remove the triple square bolts securing the factory sway bar mounting brackets to the rear subframe.



**Step 3a**– Remove reinforcing cross members (Allroad, Sportback, Cabrolet).

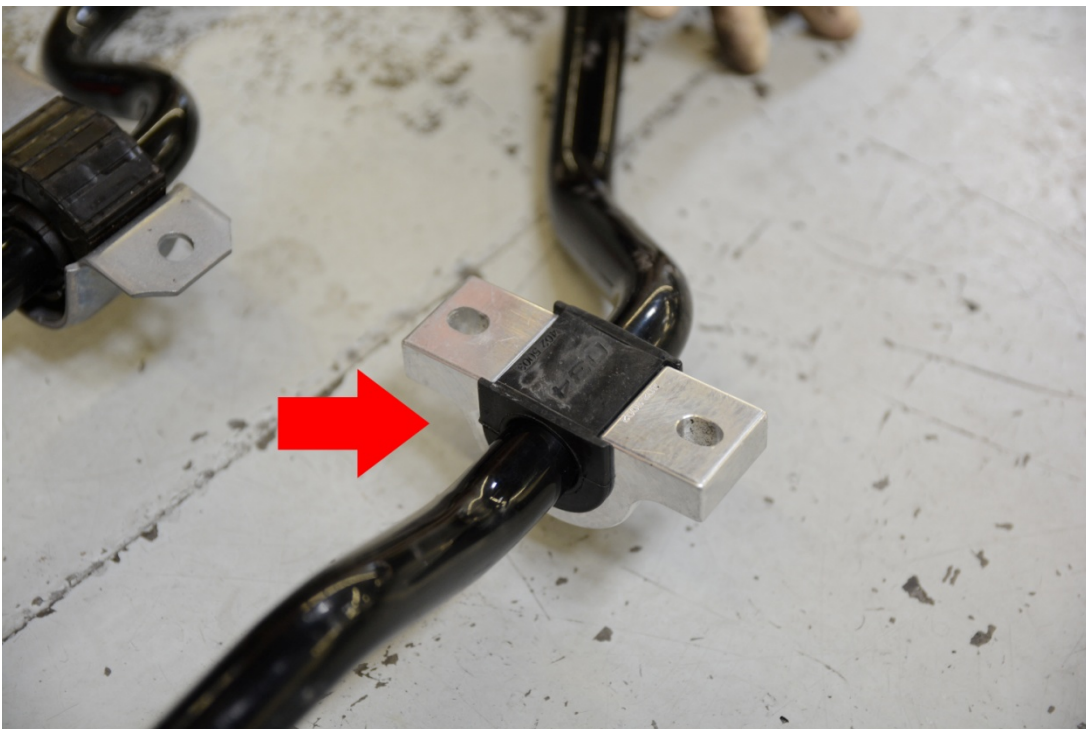




**Step 4** – With the sway bar mounting brackets and end links removed, snake out the rear sway bar from underneath the vehicle.



**Step 5** – After applying the supplied grease on the inside of the bushings, install the polyurethane sway bar bushings and billet aluminum brackets onto the bar as shown.





**Step 6** – Install the 034Motorsport Dynamic+ Adjustable Rear Sway Bar in the same orientation as the factory bar, placing the supplied Sway Bar Bushing Backing Plates between the bushing/bracket and subframe as shown below.

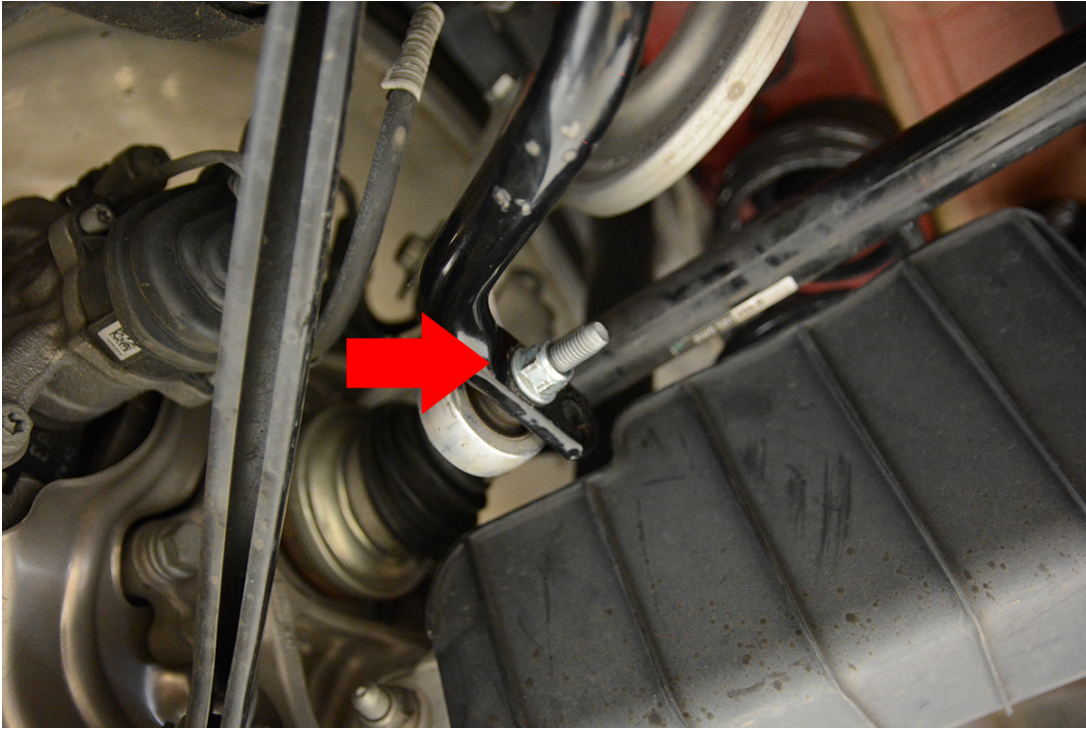


**Step 7** –Snug up the supplied Sway Bar Bracket hardware, but do not tighten fully.

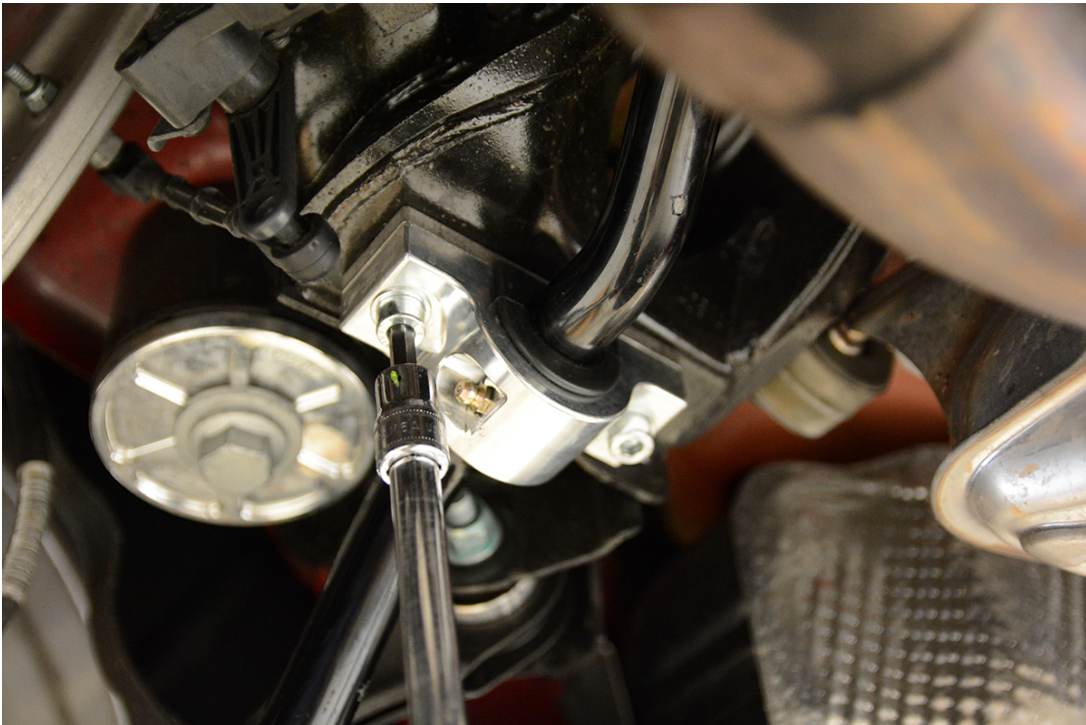




**Step 8** – Attach the sway bar end links to the 034Motorsport Dynamic+ Adjustable Rear Sway Bar using the factory hardware, but do not tighten fully. **Compress suspension to static ride height.** Torque end link hardware to 40 Nm + 180 Degrees.

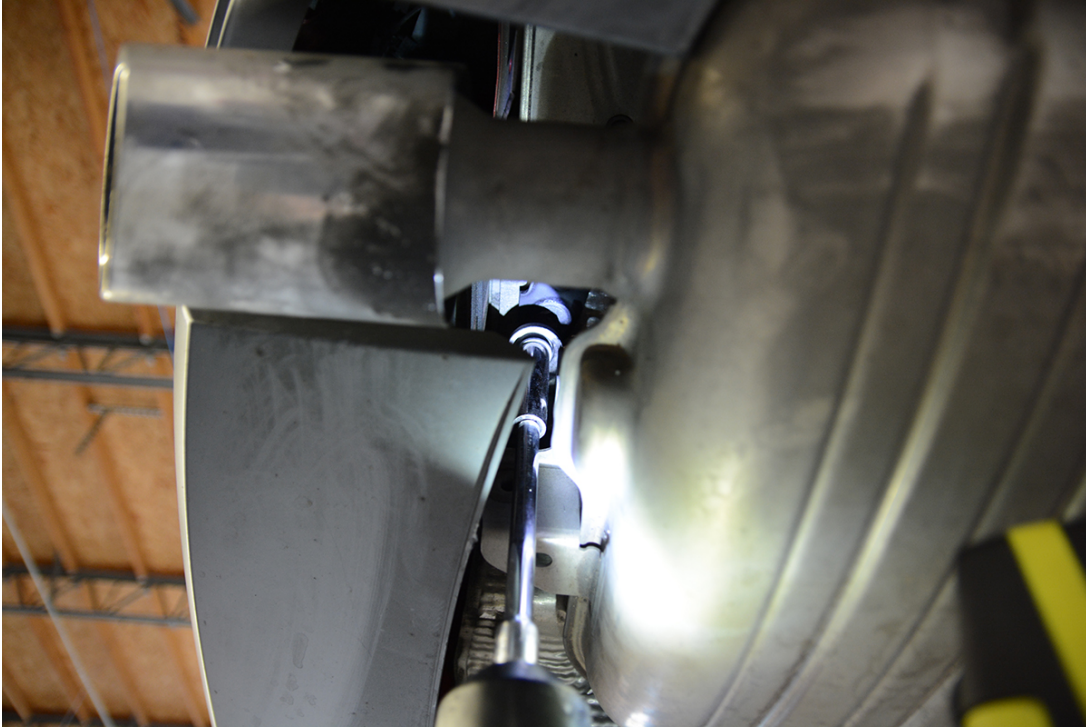


**Step 9** – Tighten the sway bar mount bracket bolts to 28 Nm.





**Step 10** – Raise the exhaust and reinstall the exhaust hanger bolts you removed in Step 1.



**Step 10a** – Replace reinforcing cross members removed in Step 3a (Allroad, Sportback, Cabrolet).

**Step 11** – Check all hardware to ensure that everything is tight. You're done!

